



Donegal Hotel Collection



CENTRAL HOTEL  
CONFERENCE & LEISURE CENTRE



The Nesbitt Arms  
Boutique Hotel





# Donegal Hotel Collection

*The Abbey Hotel and Central Hotel, located in the heart of Donegal Town overlooking Donegal Bay, boasts 234 spacious guestrooms and offers lively entertainment with culinary options inspired by the Wild Atlantic Way. The Nesbitt Arms Boutique Hotel, situated in the enchanting Heritage Town of Ardara, with 49 En-Suite Guestrooms with award winning Chef's Ramblers Bar & Restaurant. An ideal base for exploring local heritage, shopping for Donegal Tweed and a visit to the Highest Sea cliffs in Europe is a must!*







**AH**  
**ABBHEY HOTEL**



*As one of the longest established Hotels in the North West, renowned for its unique setting in the Centre of the Historic Town of Donegal, with idyllic views of Donegal Bay in the background, the Hotel is perfectly located to enjoy the beautiful County of Donegal.*



# The Market House Restaurant

## “Laughter is Brightest where Food is Best”

*The Market House Restaurant in the heart of Donegal Town, features an outstanding selection of menus showcasing the finest local ingredients from land and sea. Our team offer an authentic, warm Donegal welcome, provide true Irish hospitality and place a strong emphasis on superior customer service.*

*Seafood and Steaks are the mainstay at The Market House. Famous for our Steak on the Stone Experience using 100% locally sourced beef renowned for flavour, tenderness and quality. Our Stone Experience has expanded to incorporate local seafood such as King Prawn, Tuna Steak and Monkfish.*



# The Abbey Bar

*The Abbey Bar offers a contemporary, lively and vibrant venue, very popular among Donegal locals and visitors alike. Modern and comfortable, our newly designed unique two-level bar is a great place to meet up with friends and enjoy the sounds of traditional Irish folk music or live music from Ireland's Top Cover Bands. Enjoy a casual bite to eat from our Bar Food Menu served daily from 12noon or maybe an evening of delicious Cocktails, Speciality Gins or Irish Whiskeys.*



# The Food Hall

*The Market House also has a unique lunchtime offering at The Food Hall. There are freshly made dishes available to suit everyone's tastes - Salads from The Healthy Garden, Hot Daily Specials, Paninis, Sandwiches and Wraps and not forgetting calorie-friendly Healthy Options.*





# Rooms The Abbey Hotel

*The Guestrooms at The Abbey Hotel include different configurations to suit your requirements from Double Rooms, Twin Rooms, Triple Rooms, Family Rooms, Single Rooms in addition to King Rooms with Superior Rooms overlooking the Iconic Diamond in Donegal Town with Executive Suites also available. All rooms are equipped with en-suite, flat screen TV, Tea & Coffee facilities & all include complimentary WIFI in addition to our Suitepad where guests can obtain all hotel information online, make dining reservation requests & opt in to our green initiative. Guests can enjoy views of Donegal Town to the front of the Hotel and views overlooking River Eske to the rear of the hotel.*



# CENTRAL HOTEL

CONFERENCE & LEISURE CENTRE



*As one of the longest established Hotels in the North West, renowned for its unique setting in the Centre of the Historic Donegal Town, with idyllic views of Donegal Bay in the background, the Hotel is perfectly located to enjoy the beautiful County of Donegal. Within minutes of stunning coastal drives, beaches and signature discovery points of the famous Wild Atlantic Way, The Central Hotel Donegal Town this is the perfect location for you to stay.*



# Thai Fusion at Chapmans

## RESTAURANT

***"Chapmans Restaurant offers an Asian Fusion Menu with an intimate dining experience"***

*If you are looking for a special evening with beautiful surroundings, Thai Fusion at Chapman's Restaurant fits the bill. Using farm fresh ingredients, Head Chef, Joko Setiadi is most enthusiastic and passionate about his note worthy dishes executing traditional Thai recipes. From familiar favorites like Sizzling Spicy Noodle Stir fry Nasi Goering and Mee Goering, Thai Fusion @ Chapmans will tantalise all palates. A dreamy selection of wine to couple these delectable dishes and a wonderful service team makes it a meal experience like no other.*





# Blazers Burger Bar & Grill

*Blazers Burger Bar & Grill is an exciting new dining concept at The Central Hotel. Opened in July 2019, Blazers have been serving up mouth-watering Burgers, Steaks, Sizzling Dishes and more much to the delight of locals and visitors to Donegal Town. Blazers Burgers are sourced locally from Eddie Walsh & Sons Craft Butchers who specialise in Aubrac beef, renowned for its flavour, tenderness and quality.*



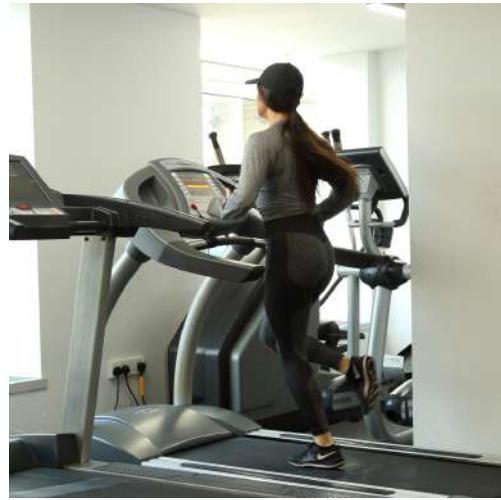


# Rooms The Central Hotel

*The guest rooms at The Central Hotel include different configurations to suit your requirements from Double Rooms, Twin Rooms, Triple Rooms, Family Rooms, Single Rooms in addition to King Rooms with Bay view Rooms overlooking Donegal Bay on the Wild Atlantic Way. All rooms are equipped with en-suite, flat screen TV, Tea & Coffee facilities & all include complimentary WIFI in addition to our Suitepad where guests can obtain all hotel information online, make dining reservation requests & opt in to our green initiative. Why not upgrade to one of our Bay view guest rooms to enhance your stay and enjoy the views overlooking Donegal Bay.*



# CENTRAL HOTEL LEISURE CENTRE



*Hotel guests can avail of complimentary access to our leisure centre, perfect for an all over workout or playtime with the kids. Take a dip in our pool or unwind & relax in our steamroom*

## ***Facilities include***

*Swimming pool, Separate kids pool, Jacuzzi, Steam room, Extensive gym with cardiovascular & resistance equipment, freeweights.*

*[www.centralhoteldonegal.com](http://www.centralhoteldonegal.com)*



# AFTERNOON TEA

*"There are few hours in life more agreeable than the hour dedicated to the ceremony known as afternoon tea." – Henry James*



*Enjoy our Afternoon Tea in the light filled Balcony overlooking the Diamond or as a private party in one of the dining rooms.*

*Carefully selected, locally sourced ingredients are used to make The Central Hotel's Afternoon Tea a must try experience in Donegal Town.*

*Enjoy our freshly made sandwiches, buttermilk scones, assorted mini pastries, smoked irish salmon on brown bread and much more...*

*Add a Snipe of Prosecco or Choose one of our Speciality Cocktails*



The Nesbitt Arms  
Boutique Hotel



*The Nesbitt Arms Boutique Hotel is a charming family run hotel located in the heart of County Donegal. Centrally located in the Heritage Town of Ardara, nestled in a valley surrounded by magnificent scenery on Donegal's Wild Atlantic Way. The hotel, steeped in history, was established in 1838 and has evolved over the years to a beautiful 49 en-suite bedroom welcoming spot.*



# Ramblers Bar

## RESTAURANT

*With award winning Chefs, Ramblers Bar & Restaurant offers the finest heart-warming traditional dishes which can be washed down “fireside” with one of our local craft beers or whiskeys. All our food is locally sourced where possible to keep our carbon foot print to a minimum. Overlooking the main street of Ardara, enjoy a more formal and intimate dining experience in our Ramblers Restaurant. Our menu caters for all discerning palates including vegetarians and vegans alike.....*

*A Donegal welcome awaits you !*





# Upstairs @ Ramblers

RESTAURANT

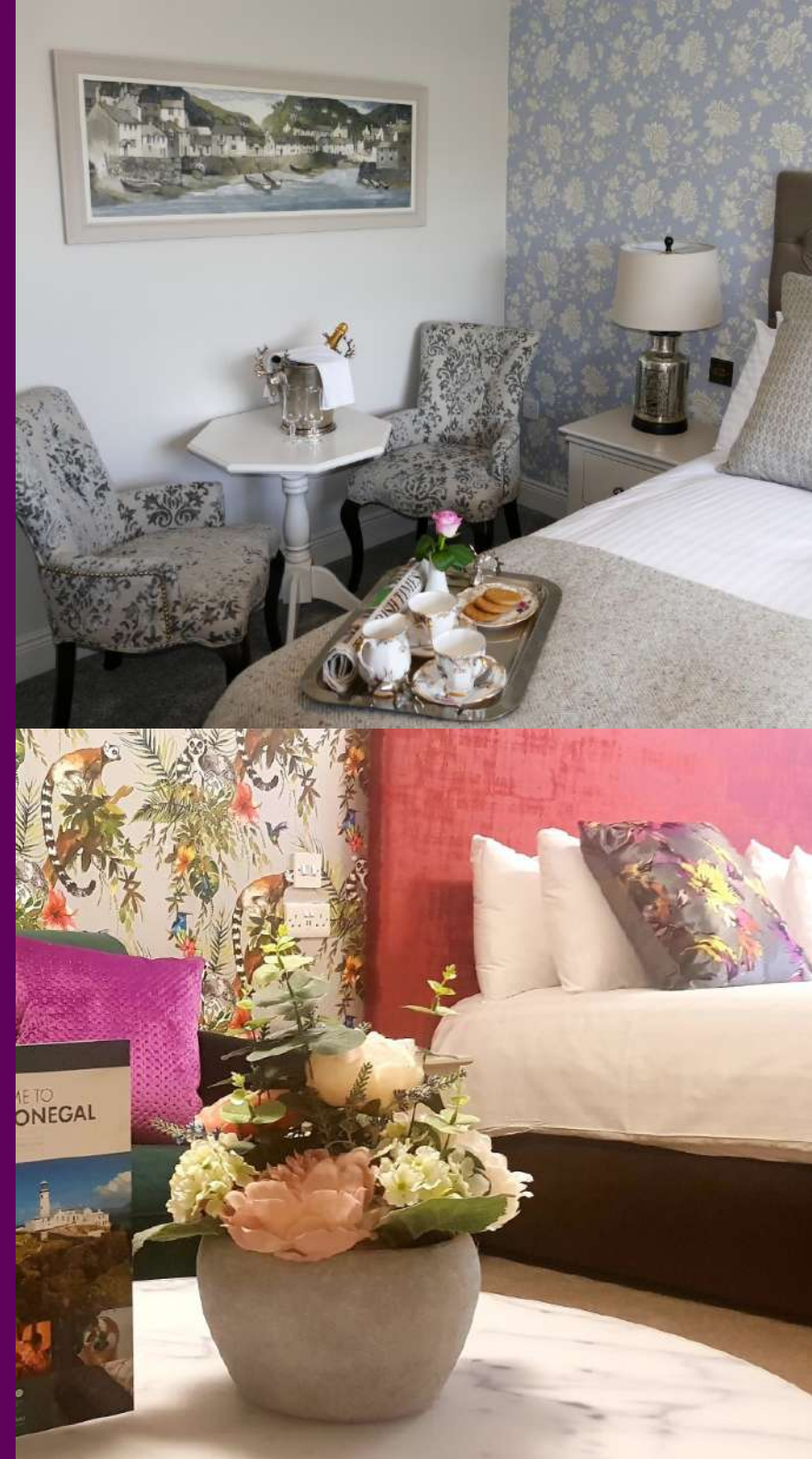
*Upstairs @ Ramblers is tastefully decorated in greens and purples reflecting the heathers and terrain outdoors. It is an ideal place for private parties, small groups family parties etc. Here you can design your menu for your special event.*





# Rooms The Nesbitt Arms Boutique Hotel

*This unique historical hotel has 49 en-suite bedrooms with a mix of character enveloping the original building dating back to 1838 to a more contemporary addition in 2004, all of which tastefully compliments each other. The hotel, now fully refurbished is a delightful retreat for all guests to experience true Irish hospitality at its best. Each of our Standard rooms provide a comfortable and versatile space offering a unique contemporary experience. Our rooms are uniquely designed to fit around the history of the building allowing the past meet the present.*





# ATTRACTIONS









## **DONEGAL CASTLE**

Built by the O'Donnell chieftain in the 15th century, beside the River Eske, the Castle has extensive 17th century additions by Sir Basil Brooke. The Castle is furnished throughout and includes Persian rugs and French tapestries. Information panels chronicle the history of the Castle owners from the O'Donnell chieftains to the Brooke family. Limited access for people with disabilities to the ground floor.



## **GLENVEAGH NATIONAL PARK**

Some 16,540 hectares (40,873 acres) of mountains, lakes, glens and woods, with a herd of red deer. A Scottish style castle is surrounded by one of the finest gardens in Ireland, which contrast with the rugged surroundings. The Visitor Centre houses exhibitions and an audio-visual show. The Visitor Centre is accessible for visitors with disabilities.



## ***THE FOLK VILLAGE GLENCOLM-CILLE***



The Folk Village Museum was the initiative of a dynamic Donegal priest, Father James McDyer. It opened in 1967 with three cottages, built and furnished in just three months through local community effort. At the time of Father McDyer's arrival in 1951 the parish of Glencolmcille was suffering from a long-standing cycle of unemployment and emigration. Over the next three decades Father McDyer worked to help break this cycle, lobbying for amenities, organising community projects and supporting the development of local industries, many of which, like the Folk Village, are still successful today. New cottages and exhibits have been added over the years, and the Folk Village Museum is still very much a community concern.

## ***BELLEEK POTTERY***



Promoting over 160 years of craftsmanship, Belleek Pottery is located in the quaint village of Belleek in Co. Fermanagh on the banks of the River Erne. This Neo-Georgian building is home to Ireland's oldest working fine china pottery. Established in 1857, Belleek Pottery holds a very special place in Ireland's cultural and commercial heritage. Producing more than 100,000 pieces of pottery annually, passing through 16 pairs of hands, Belleek has opened its doors by giving you the chance to buy their special pieces online. The Belleek Group comprises world renowned gift and tableware brands of Belleek Classic, Belleek Living, Galway Irish Crystal and Aynsley China.

## ***DONEGAL CRAFT VILLAGE***



We are a creative collective of craft and art studios and shops all clustered around a beautiful courtyard. We are a small community of skilled independent handcrafters and we invite you into our workshops to view our glass, hand-woven textiles, painting, jewellery, printmaking and handmade felt art. Situated 2km outside Donegal Town on the Wild Atlantic Way, the Craft Village is also home to the award winning Aroma coffee shop and mini bakery famous for its divine cakes, homemade brown bread and mouthwatering lunches.

## ***DONEGAL RAILWAY HERITAGE CENTRE***



The County Donegal Railway and the Londonderry & Lough Swilly Railway, with a total of 225 miles of track, formed the largest narrow gauge railway system in north-west Europe.

## ***SHOPPING***

Donegal Town has streets filled with independent shops, with something for everyone to make sure your shopping experience is one to remember.

# SLIEVE LEAGUE CLIFFS

Slieve League Cliffs (or Sliabh Liag in Gaelic), situated on the south west coast of County Donegal, 45 mins from the hotel, are said to be the one of the highest and finest marine cliffs in Europe. To fully enjoy the spectacle of Sliabh League it is best to leave your car at the car park and walk the few miles to the cliffs so as not to miss the exciting scenery of the area.



There are terrific views of the Atlantic Ocean, the Sligo Mountains, Donegal Bay and as far as Mayo as you walk towards the terrifyingly high top of Sliabh League, where the cliff face of Bunglas rises over 600m above the raging ocean. Experienced walkers only should venture beyond the viewing point onto One Man's Pass which loops around onto the Pilgrim's Path.



This is a sacred mountain, for over a thousand years there was a Christian pilgrimage. You should remember this when visiting, so please do not disturb these monuments of Irish cultural heritage. There's much to know about Sliabh League, like the monks who went to Iceland or the eagle and the baby. To learn more visit the award winning Slieve League Cliffs Centre which is all about local culture, food and crafts served with a real warm Donegal welcome and sense of humour.



# GOLF

An aerial photograph of a lush green golf course. The course features several sand traps and a small body of water. In the background, a large body of water, likely the Atlantic Ocean, stretches to the horizon under a dramatic, cloudy sky. The word "GOLF" is superimposed in large, white, serif capital letters across the upper portion of the image.

Without having to travel for longer than an hour at any stage, you can sample two of Ireland's most renowned championship golf courses during your stay at one of the Donegal Hotel Collections Hotels



# DONEGAL GOLF CLUB

Donegal Golf Club – ‘Murvagh’ Our friends at Donegal Golf Club have just about perfected the warm Donegal welcome that our guests have come to expect. Grainne and the team at ‘Murvagh’ are justifiably proud of the reputation that this links gem has developed over the past couple of decades.



The course is located on the Murvagh peninsula which juts out into Donegal Bay and offers panoramic views of the Wild Atlantic Way coastline. Designed originally by Eddie Hackett and updated more recently by Pat Ruddy, there are memorable holes throughout the 18. The par 5 8th has been regularly named as one of the finest holes in Europe.



Regularly name as one of the ‘Top 20’ courses in Ireland, the entrance to Murvagh will make you wonder whether you might have somehow been transported to ‘Magnolia Lane’ at Augusta National! The long tree lined driveway allows first time visitor to become suitably excited about what lies ahead, before you exit the trees and the beautifully manicured course opens up in front of you.



When you make your way to the back 9 at Murvagh, you will be confronted by severe challenges at the Par 5 12th and the monster Par 3 16th which can measure 250 yards from the back tees. These treacherous holes are punctuated by scoring opportunities so you wont leave the course feeling like you have taken too much of a beating!



# NARIN & PORTNOO GOLF CLUB

Situated in the rugged rural setting of West Donegal, a round at Narin & Portnoo can feel like you have for once escaped the irritations of modern life. An unassuming but modern clubhouse greets you as does a warm welcome at the pro shop. The tight car park, putting green and first tee ensure that you are likely to have an audience for your opening tee shot so make sure it is a good one!



Once you make your way into the heart of your round you will begin to marvel at the vantage points and views across Gweebarra Bay. The course was initially opened in 1930 and retains many classic links featured but extensive improvements were made to the course over the years with the most recent in 2004.



The Par 5, 15th is undoubtedly one of the most striking holes in Irish golf. A hole that is bordered from tee to green by Narin beach and a tee shot that is raised offering a spectacular view as you unleash your drive. Anything right on this hole is out of bounds and you may give one or two morning walkers on the beach a bit of a fright! You will spend the evening marvelling at the array of photographs you have collected during your round on this links gem.



The course is now entering an exciting new phase with a new owner in place so watch this space for the next chapter at Narin & Portnoo!



# Donegal Hotel Collection

[www.donegalhotelcollection.com](http://www.donegalhotelcollection.com)



T: +353 (0) 749721014

E: [info@abbeyhoteldonegal.com](mailto:info@abbeyhoteldonegal.com)

WEB: [www.abbeyhoteldonegal.com](http://www.abbeyhoteldonegal.com)



T: +353 (0) 749721027

E: [info@centralhoteldonegal.com](mailto:info@centralhoteldonegal.com)

WEB: [www.centralhoteldonegal.com](http://www.centralhoteldonegal.com)



The Nesbitt Arms  
Boutique Hotel

T: +353 (0) 74 9541103

E: [info@nesbittarms.com](mailto:info@nesbittarms.com)

WEB: [www.nesbittarms.com](http://www.nesbittarms.com)

